



Cowtown Cruiser Program (CCP)

How-To Booklet

Tracking Points

By Douglas McMahan

Cowtown Cruiser Program (CCP) Methods – Examples & Suggestions

Table of Contents

Cowtown Cruiser Program (CCP)..... 1

How-To Booklet..... 1

Tracking Points 1

Overview 3

Competition Year End Method 3

 How this works 3

 Competition Year-End 4

On-Going Method..... 4

 How This Works 4

 Competition Year-End 4

Hybrid Method 5

Turning in Your Entry 5

 Posting Photos of Your Stops..... 5

 The Final Step..... 5

Appendix A: Using On-Line Photo Labs for Printing 6

Cowtown Cruiser Program (CCP) Methods – Examples & Suggestions

Overview

Since the Cowtown Cruiser Program (CCP) started in 2005, we have seen two primary methods along with a hybrid used for tracking points and photos for the Annual Competition. While this document is fairly long, it is not complicated but it does take a few too many words to actually explain the recap of the methods. Keep in mind the methods and such explained here are only examples and suggestions that we have seen used in the past.

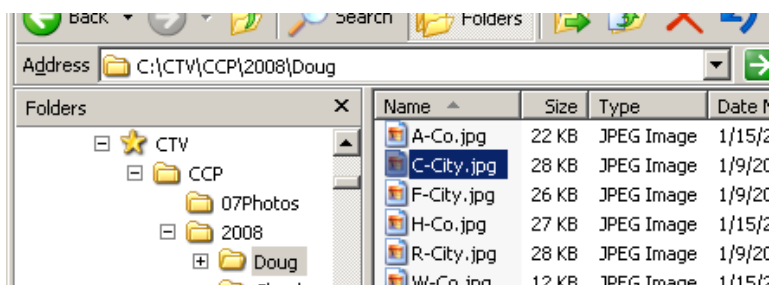
Competition Year End Method

This method keeps all the photos organized and ready for creation of the photo books for the end of each Competition year. We have seen participants with digital cameras leaning towards this method, even though it does create a little more work putting all the photos in the books at the end of the year.

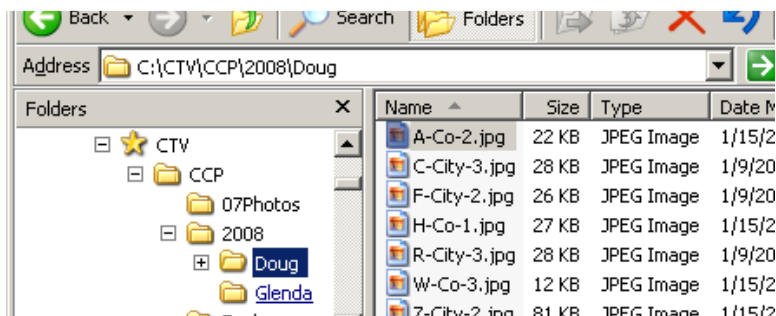
The largest benefit is printing less photos however it does require more work at the end of the competition season. Additionally, several places like Walgreens run \$.10 photo specials at year end, reducing the overall cost for printing.

How this works

On a trip in February, you capture “C” “F” “R” and “Z” cities along with “A” “H” and “W” counties, with varying values of points (1 to 3 points each). On your computer, create a directory for tracking your photos. As you file your digital photos in the directory, rename them to the point type (i.e. rename **DSC3652.jpg** to **C-City.jpg**).

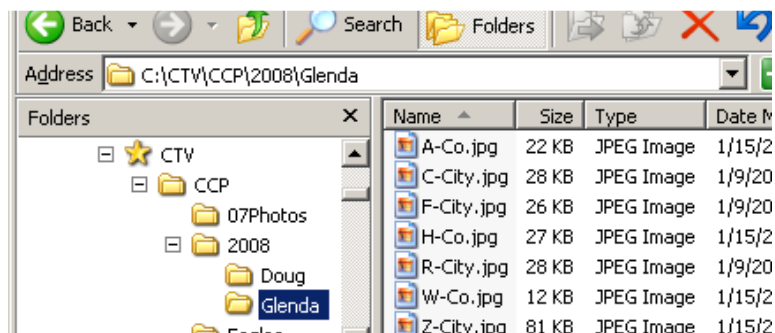


You could also rename the photos to represent the point value as well, (i.e. rename **DSC3652.jpg** to **C-City-3.jpg** representing it is a 3 point “C” city).



Cowtown Cruiser Program (CCP) Methods – Examples & Suggestions

If you and your significant other are both participating, create a directory for both of you, filing the digital photos for each of you in your own directory.



Competition Year-End

You will need to print your photos and organize them so that the CCP Committee can validate your stops/points. For more information on what to do next, reference the section [“Turning in Your Entry”](#)

You now have all of your stops/photos in your directory, it is time to either burn them to a CD or upload them to your favorite photo lab for printing. Since these are located inside a directory by participant, you can upload the first participant's photos in one transaction and the other's in a second transaction.

Example: I would upload all the photos in the **Doug** directory as transaction 1 for printing. Then I would upload all the photos in the **Glenda** directory as transaction 2 for printing. This way when you get them from the lab, they are separated by participant and if they print them in order, they will also be in alphabetical order.

Note: For an example of how to use an on-line photo lab for printing, see [Appendix A](#)

On-Going Method

This method lends itself to building the competition year-end book as the events and points take place. While this method allows you to build your book as you go, you will end up printing more photos as you tend to replace a photo / point with a higher point value photo later in the year. The other case is if you travel later in the year, taking a photo of equal value to an earlier one that might be more appealing to use in your competition / album.

The largest benefit to this model is that you do have your album in progress, starting at the beginning of the year and there is less work at the end of the annual competition.

How This Works

As you complete a stop/point from your cruise, print your photos and enter the stops/points on your Cruiser Form or the Spreadsheet. If you are using a photo album to keep your stops/photos organized, place the photos in the appropriate slots for that entry.

Competition Year-End

Keep in mind the CCP Committee must validate all participants' entries between the end of the competition season and in time to get patches and awards created; please organize them so that it is as painless for them as possible. For more information on what to do next, reference the section [“Turning in Your Entry”](#)

Cowtown Cruiser Program (CCP) Methods – Examples & Suggestions

Hybrid Method

This method is a safe method used to minimize printing photos that may later be replaced, since you would only print photos from stops that have a 2 or 3 point value. Take for instance that you are out cruising (out of state) and you get 3-point stops for your “A” “F” and “H” cities along with your “B” “C” “J” and “M” counties – 3 points is the highest value of entry you can have for city or county, go ahead and print those, placing the photos in your album. On this trip you also capture 1 point stops for your “B” & “R” cities and “D” and “S” counties – don’t print those because by the end of the year you might capture a 2 or 3 point stop/photo for those letters instead of the 1 point stop/photo.

Note: Be sure to file the digital image of those in your folder so that you can print them in case you don’t replace them by year end.

Turning in Your Entry

Regardless if you turn in your photos loose or in albums, please organize them for us, it REALLY helps the committee to validate the stops/points at year end. Below is a “recommended” method for organizing your stops/photos:

- Cities / Towns
- Counties / Parish
- States
- Socials / NCCC
- State / Nat’l Park
- Creeks / Rivers
- Nat’l Forest
- NCM / Corvette Events
- NCCC Nat’l Convention
- KY Corvette Facility
- Cruise Sponsor

Posting Photos of Your Stops

Most participants find it easier to use a photo album to organize your stops/points. These can typically be obtained for \$3 to \$5 at various stores – several of us wait to catch them on sale and you can typically find them 2 for \$5 (for a 200 photo album). The albums can be one that holds only one participant’s stops/photos for on that holds both yours and your significant other’s photos.

We have seen some that use dividers separating each section while others don’t, some have taken the spreadsheet for tracking points and printed it at a size that fits in the albums, using that for a divider for each section.

The Final Step

Now that you have the photos of your stops organized, make sure your Entry Form is updated and cross-check your entries on the form against the photos. The photos and entry form will need to be turned in to the Cruiser Chairperson by the deadline listed on the back of the form (also on the website). The Committee will look thru your Entry Form, validating each stop/point against the photo. They will use resource like the Historical Marker websites from the various states, the Texas Courthouse book and other resources as needed. It is possible they will have questions when they are validating – if so, they will be in contact with you.

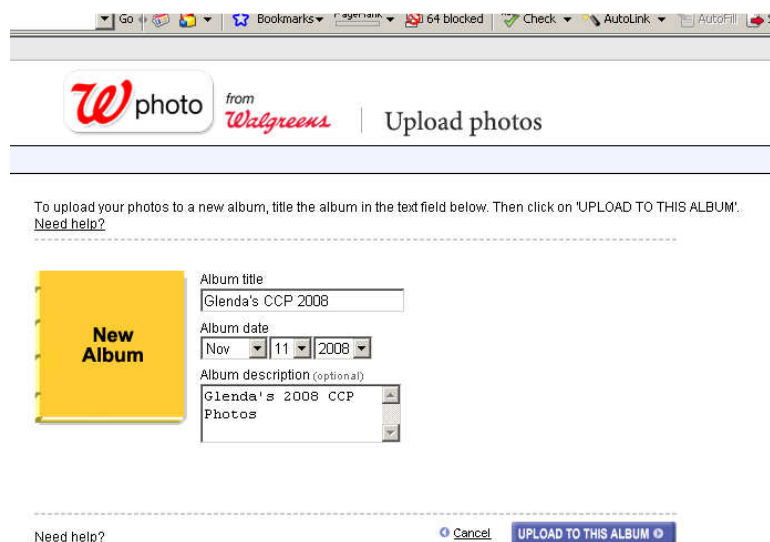
The Bronze, Silver and Gold patches along with awards for the top three participants will be awarded at the Annual Cowtown Awards Banquet and Christmas Party.

Cowtown Cruiser Program (CCP) Methods – Examples & Suggestions

Appendix A: Using On-Line Photo Labs for Printing

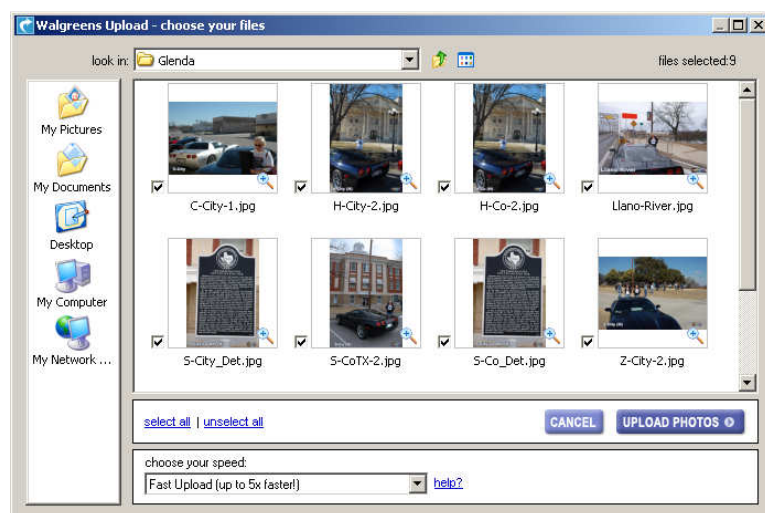
NOTE: The Walgreen example shown below is for reference only and this is not an endorsement for them ☺

Most LABs for online printing have similar screens; you basically create a photo album which will organize / hold your uploaded photos...



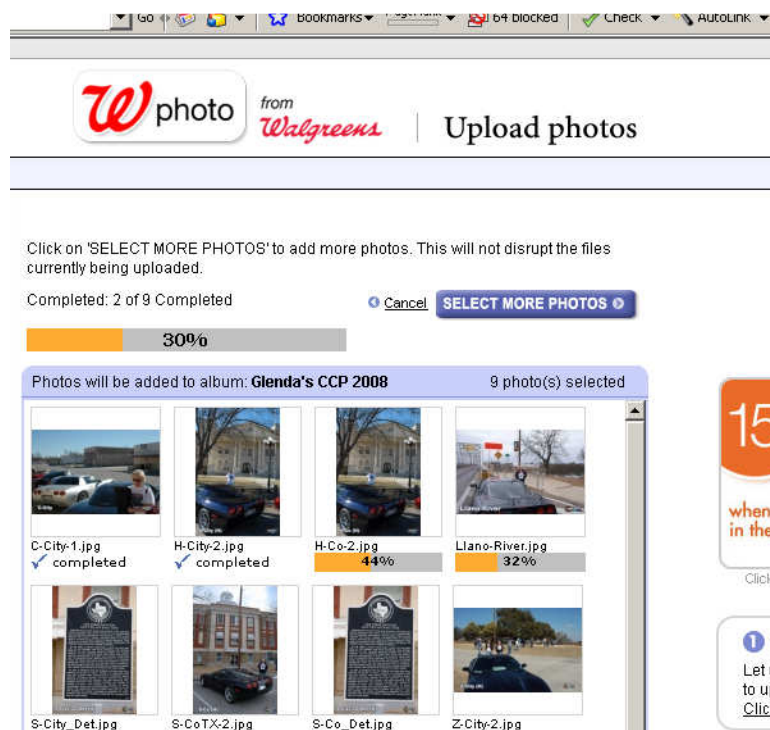
The screenshot shows a web browser window with the Walgreens photo upload interface. At the top, there's a navigation bar with the Walgreens logo and a link to 'Upload photos'. Below this, a message states: 'To upload your photos to a new album, title the album in the text field below. Then click on 'UPLOAD TO THIS ALBUM'. [Need help?](#)'. A yellow 'New Album' button is on the left. To its right is a form with the following fields: 'Album title' (containing 'Glenda's CCP 2008'), 'Album date' (set to Nov 11, 2008), and 'Album description (optional)' (containing 'Glenda's 2008 CCP Photos'). At the bottom of the form are 'Cancel' and 'UPLOAD TO THIS ALBUM' buttons.

Next, you will add photos to it – similar to what is shown below.

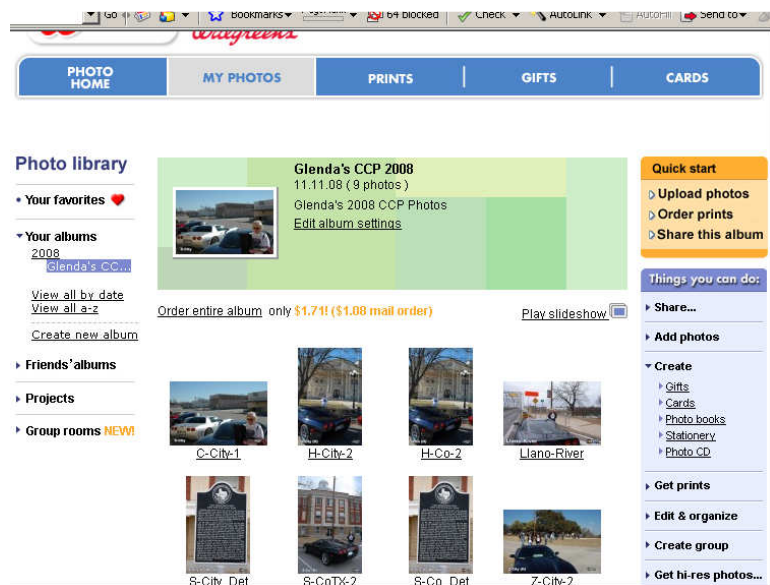


Cowtown Cruiser Program (CCP) Methods – Examples & Suggestions

The photos will start uploading after you click the “Upload Photos” button...

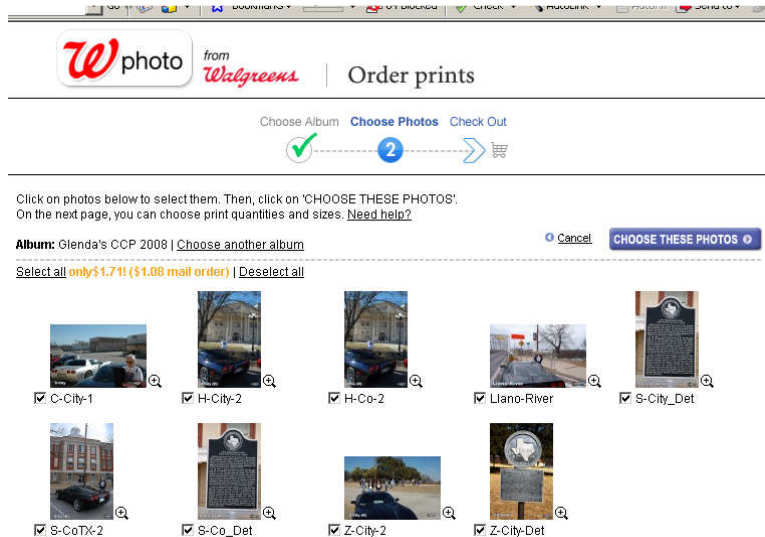


Once they are uploaded, you will see thumbnails of each picture you uploaded. You can usually preview a slideshow of your photos if you wish. When satisfied, click the “Order Entire Album” link and all photos in that album will be selected.



Cowtown Cruiser Program (CCP) Methods – Examples & Suggestions

Next, you will order prints... if you didn't choose the option to order all photos from the album, you will need to select the photos – it is simple to select them, just click the “Select All” option ☺



After clicking the “Select These Photos” button, the 4”x6” option is typically selected by default. When finished, click the “Check Out” button to finish photo pickup and payment options.

